



Fume Extractor VAC-3000

Operation Manual

Thank you for purchasing the VAC-3000.

Read these instructions thoroughly for proper use of this machine.

Make sure to read "Safety Notes" before you use machine.

This information protects you from possible dangers during use.

Apollo Seiko Ltd.

Rev.201409

Safety Notes

This manual includes the important information to use machine safely. This also includes useful information to prevent avoiding injury or damaging property.

Please read this manual carefully prior to connecting or operating the VAC-3000.

Keep this manual nearby the machine all the time.

Supply only specified voltage

Do not connect to a power supply greater than the specified voltage. If not, electrical shock and /or damage to the unit may occur.

Make sure that the electrical outlet is properly grounded. If the outlet is not properly grounded, electrical shock and/or damage to the unit may occur.

Working ambient temperature and relative humidity

This machine have been designed to use between 0~40 degree, 10%~90%.

Do not use this machine under the condition exceeding here-in.

Handle with care

This machine is designed to use solder feeder and heating iron for soldering.

If you touch a heated soldering iron, it will burn yourself. So, make sure the iron is cool down before you are touching it for replacing the iron cartridge.

Please handle this machine with care. If you drop or make a big impact/ vibration, it may cause malfunction.

If you do not use the machine for a long time,

Please turn off the power, remove the power cable and keep it in dry and cool place.

If you note malfunction on machine,

If the machine become a malfunction, turn off the power immediately and contact a dealer you purchased machine from.

Immunity from responsibility

We do not take responsibility on a damage caused by misuse, mistake, accident, uses in abnormal condition or natural disaster such as an earthquake, a fire etc.

We do not take responsibility on contingency loss (Business loss、 Business stop) caused by machine stop.

We do not take responsibility on a loss caused by the operation not mentioning on this manual.

We do not take responsibility on a loss caused by a wrong connection with other equipment.

If for any reason the internal circuitry is tampered with altered or repaired without written consent of Apollo Seiko, the warranty is null and void.

The customer is allowed to make necessary tooling adjustment, replace solder iron tips and make any necessary adjustments to the temperature controller.

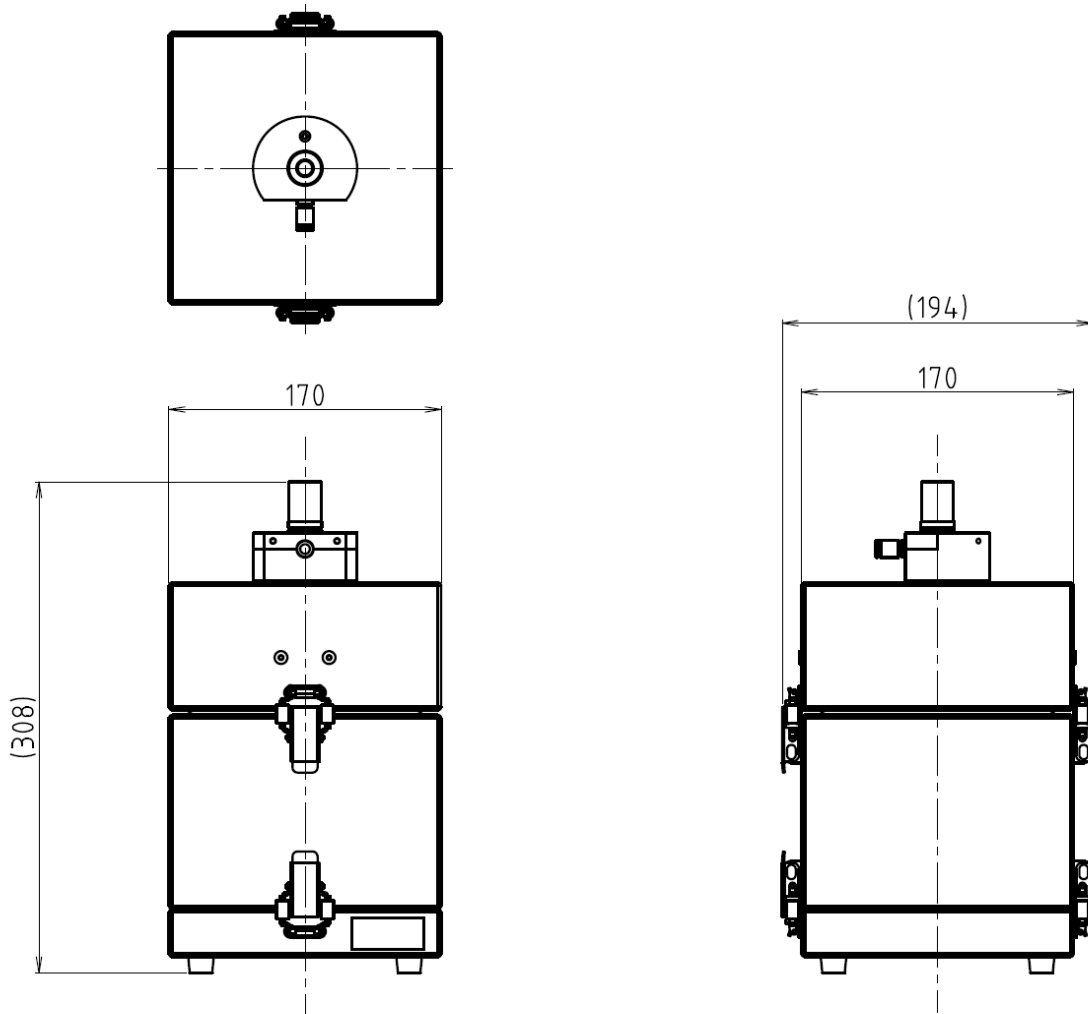
Index

Safety Notes	3
1. Summary	5
2. Dimensions	5
3. Specification	5
4. Description	6
5. How to Connect Tubes	7
6. Assembly and Disassembly	8
7. How to replace the ejector	9
8. Spare Parts List	10

1. Summary

If there is not air duct near the work space, use VAC-3000 together with VAC-1000.
Three types of filters make solder fumes clean and exhaust it inside room .

2. Dimensions

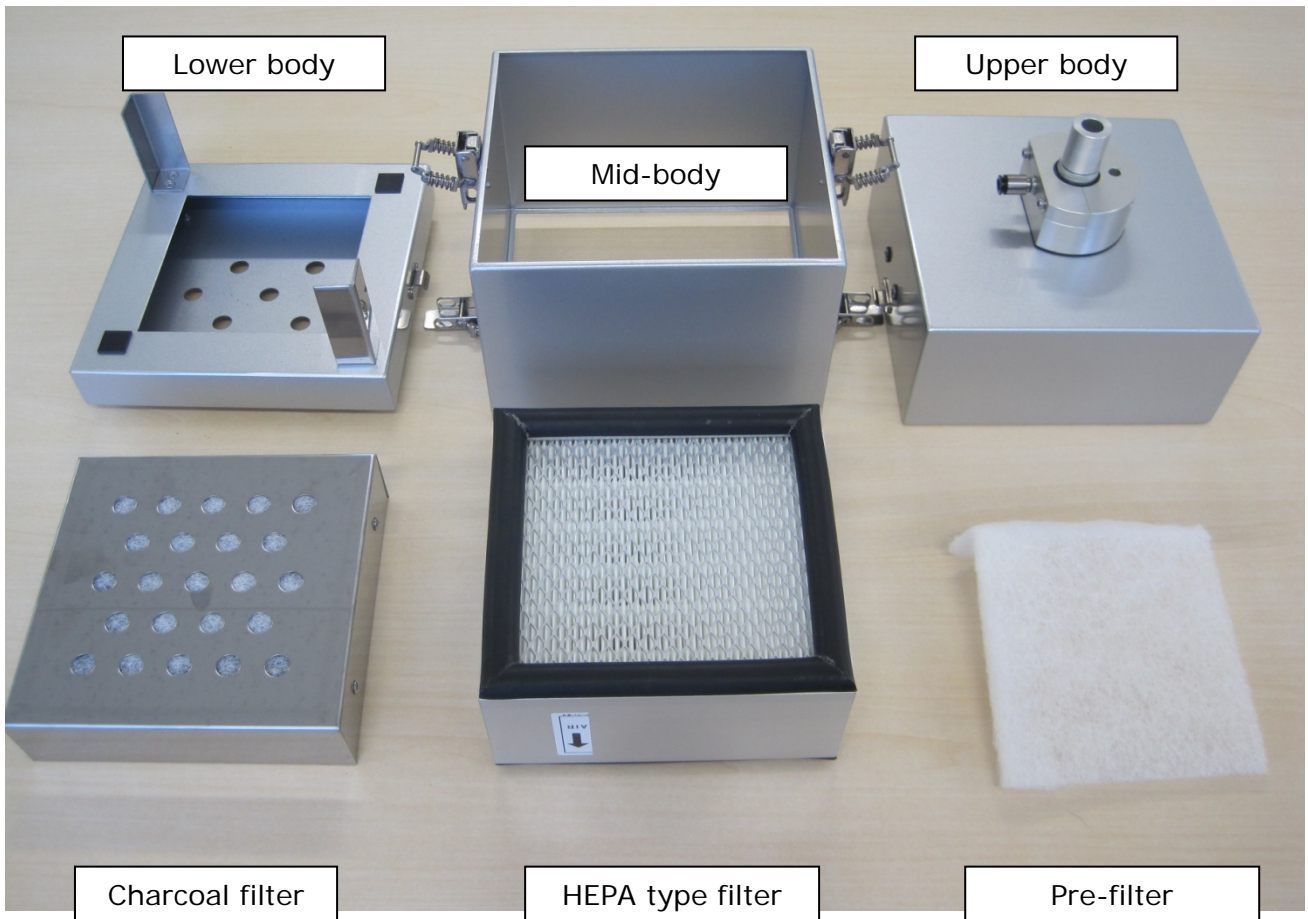


3. Specification

Main specification

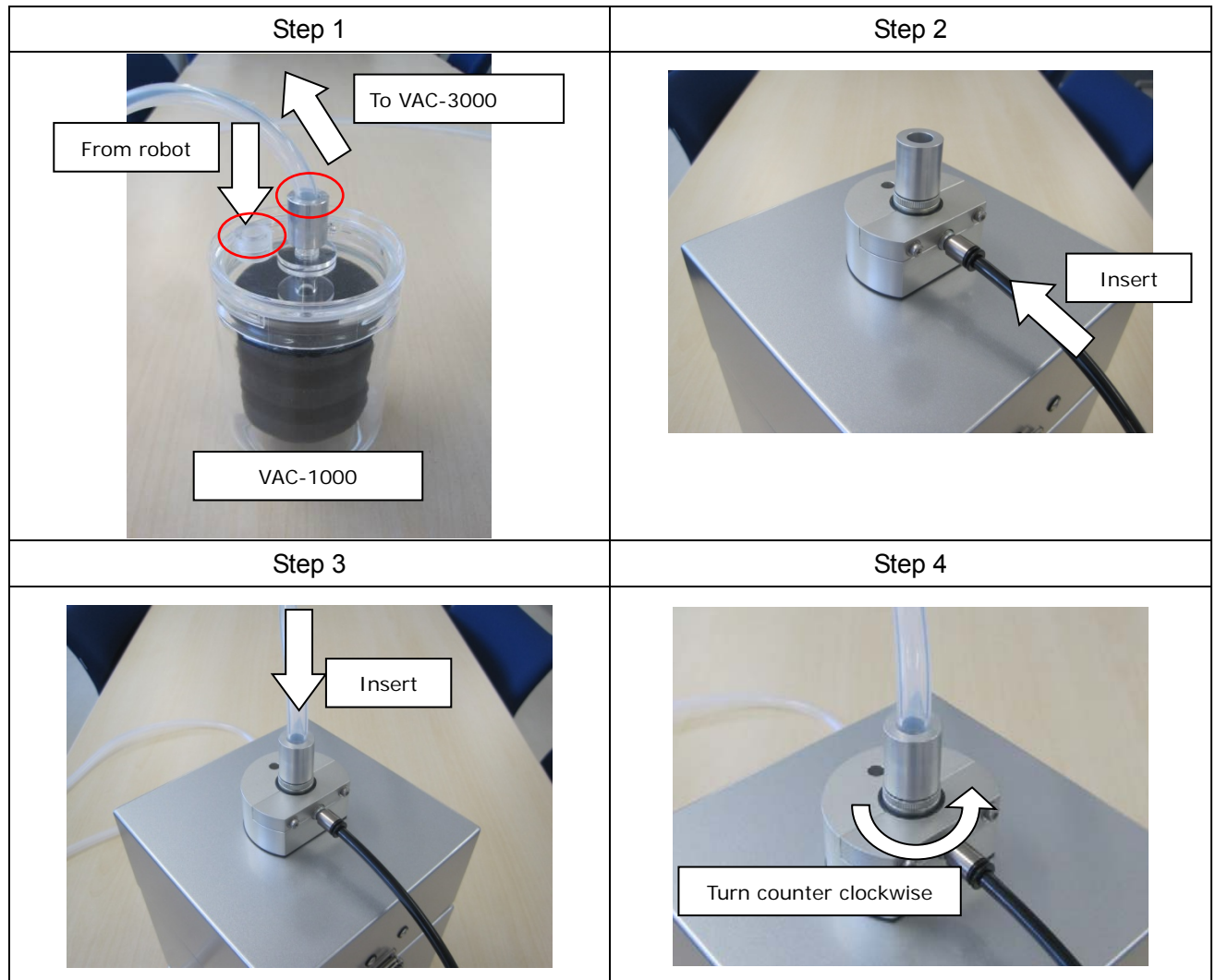
Type	VAC-3000
Filtering Rate	More than 95%, 0.3 micro meter
Vacuum Method	Ejector
Air Supply	0.5MPa, Air inlet 6mm tube fitting
Air Flow Volume	Approx. 15L/min
Size	(W)194 x (D)170 x (H)308 mm
Weight	Approx. 4.8kg

4. Description



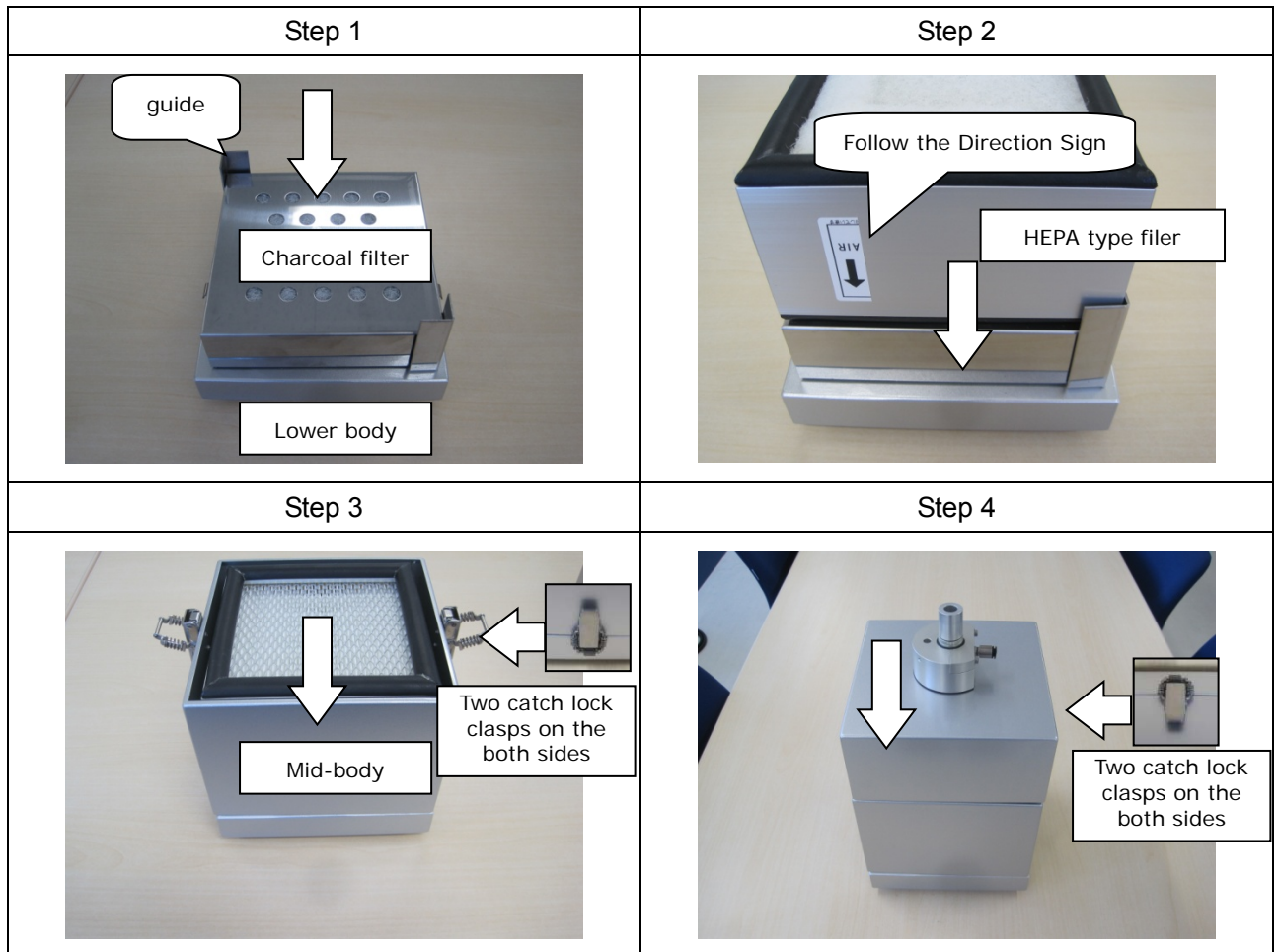
5. How to Connect Tubes

- (1) Insert the two types of silicon tubes to VAC-1000 as shown in the Step1.
One is from the robot. The other one is to VAC-3000.
- (2) Insert the black air tube to the tube fittings (6mm diameter) on the upper body.
- (3) Insert the silicon tube from VAC-1000 to the ejector inlet on the upper body.
- (4) By turning the top of the ejector, it starts intaking the fume.

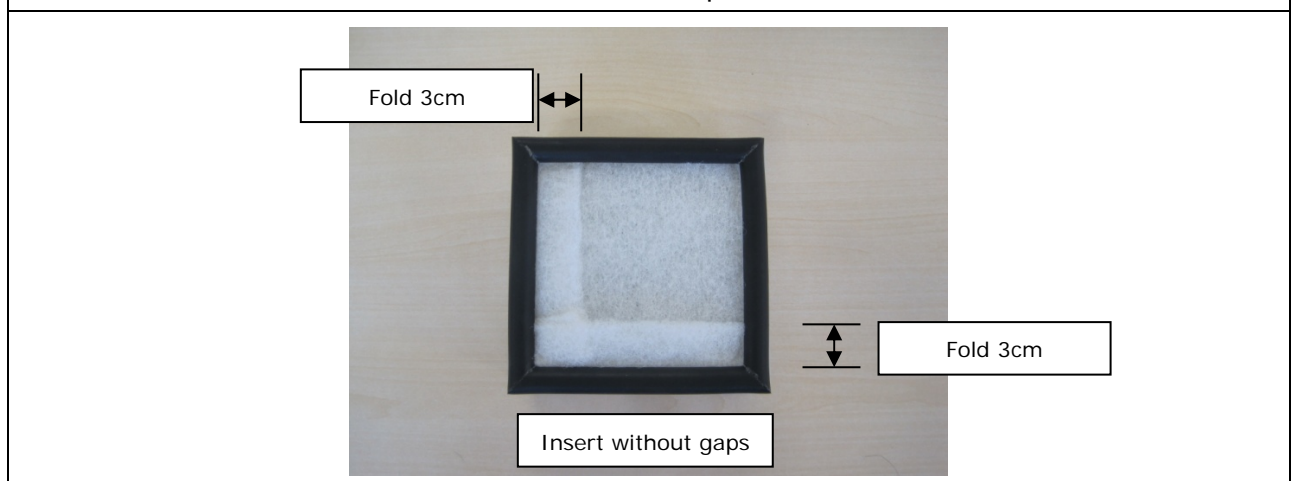


6. Assembly and Disassembly

- (1) Put the charcoal filter on the lower body with the corners fit to the two guides.
- (2) Put the pre-filter on the HEPA filter. In order to put the pre-filter on the HEPA filter, fold 3cm of the two sides of pre-filter, then insert under the black frame of the HEPA filter without gaps. If there is gaps between HEPA and pre-filter, HEPA filter lifetime may be shorten. Put these filters on the charcoal filter. Make sure the direction is proper.
- (3) Cover the mid-body on the lower body, and fasten with the two catch lock clasps.
- (4) Put the upper body on the lower + mid body, and fasten with the two catch lock clasps.



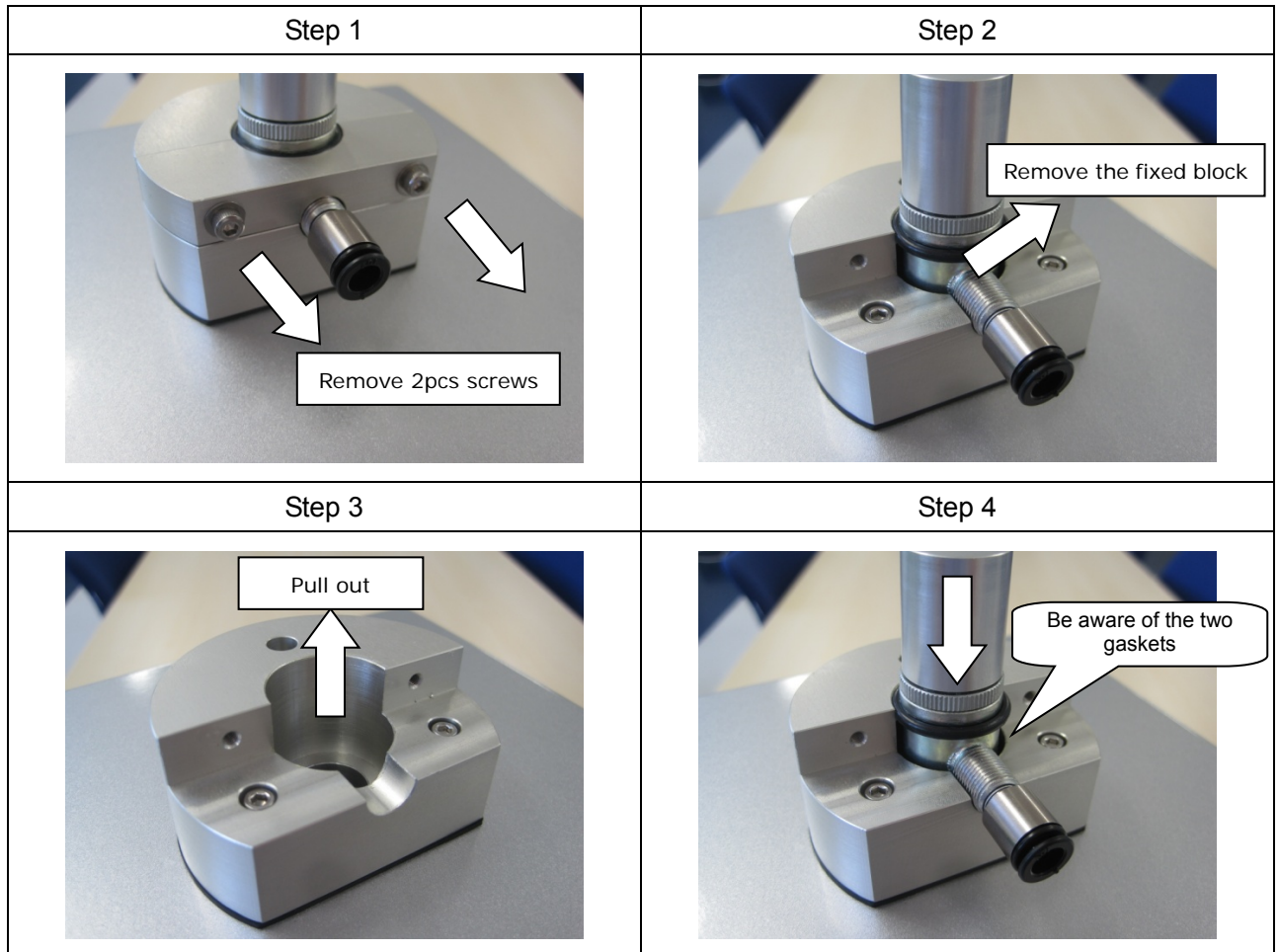
How to insert the pre-filter



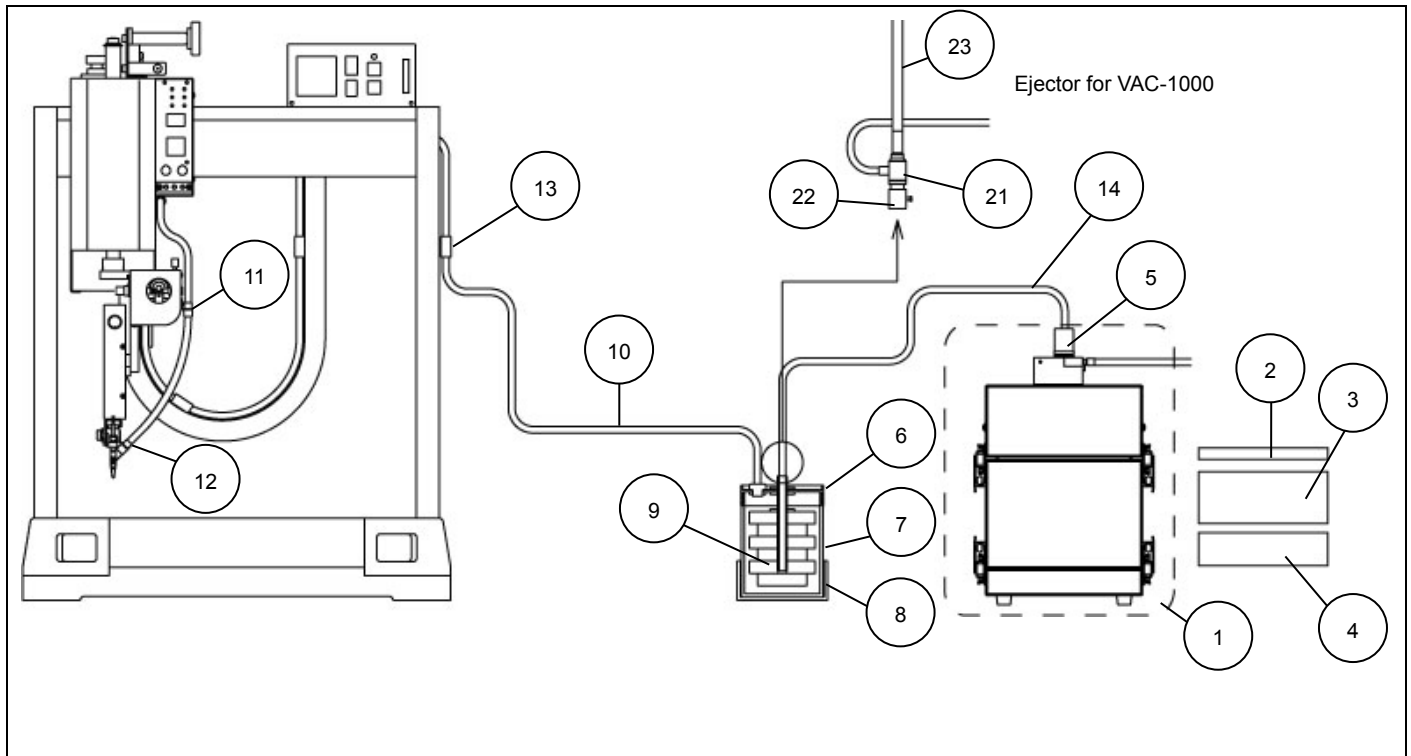
7. How to replace the ejector

- (1) Remove the 2 fixing screws.
- (2) Remove the fixing block.
- (3) Pull out the ejector.
- (4) Insert the new ejector and reassemble in the reverse order.

Note: When inserting the new ejector, make sure not to break the two gaskets.



8. Spare Parts List



No.	VAC 3000	VAC 1000	Description	Parts No.	Lifetime
1	○		Filter Unit Assy.	VAC-3001	
2	○		Pre-Filter	VAC-3002	3 month
3	○		HEPA Type Filter	VAC-3003	3- 6 month
4	○		Charcoal Filter	VAC-3004	3-6 month
5	○		Ejector Assy.	VAC-3005	
6	○	○	P-Filter Lids	VAC-3015	
		○		VAC-1015	
7	○	○	P-Filter Case	VAC-1016	
8	○	○	P-Filter Holder	VAC-1012	
9	○	○	P-Filter (3pcs)	VAC-1017	3month (3pcs)
10	○	○	Silicone Tube 11mm (3m)	VAC-1018	6 month
11	○	○	Tube Holder 90°	VAC-1019	
12	○	○	Tube Holder 60°	VAC-1020	
13	○	○	Tube Holder	VAC-1021	
14	○	○	Silicone Tube 11mm (1m)	VAC-1013	
21		○	Air Ejector	VAC-1001	
22		○	Bush	VAC-1002	
23		○	Transparent Hose 3m	VAC-1003	

Apollo Seiko Ltd.

2271-7 Jinba, Gotenba-shi,
Shizuoka, Japan

TEL: +81-(0)550-88-2828

FAX: +81-(0)550-88-2830

E-mail: sales@apolloseiko.co.jp

URL: <http://www.apolloseiko.co.jp>

